

2010 -		
10 - 8 :	:	3 :

:

5 :

$t_{1/2}=18\text{jours}$



$m=1\mu\text{g}$

/1

λ

/2

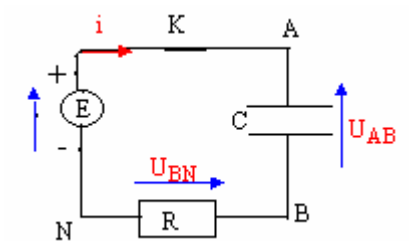
. $t_1=36\text{ jours}$

/3

$0.0156\ \mu\text{g}$

/4

6 :



. C
 . $R=1\text{K}\Omega$ K
 U_{BN}, U_{AB}, E / 1
 .(1) / 2

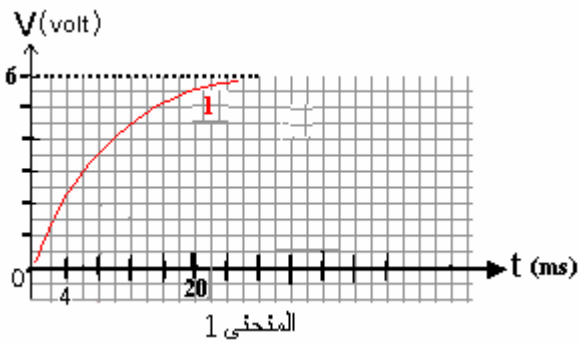
/

/

RC τ

/ 3

. C



:

4.5 :

PH=11,1 $C_1=0,10\text{mol/l}$ (S₁)

NH₃ / 1

/ 2

· V₂=100ml (S₂) / 3

(S₁) C₂=2,5·10⁻²mol/l

· 10,8 (S₂) PH / 4

· S₂ -

NH₃ -

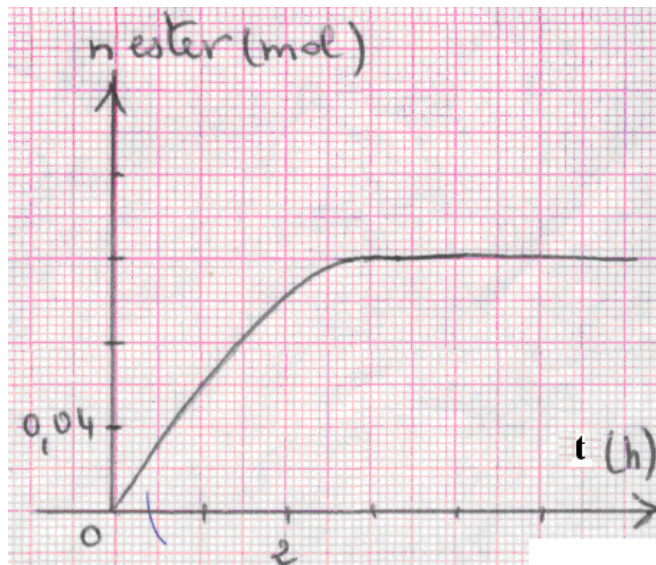
(NH₄⁺ / NH₃)

4.5 :

V=30mL Butan-2-ol 0.20mol 0.20 mol

/ 1

: / 2



t₁=1h , t₂=3h -

t=4h -